

# SMART PARKING PROJECT

## Parking Structure 6

May through November 2021

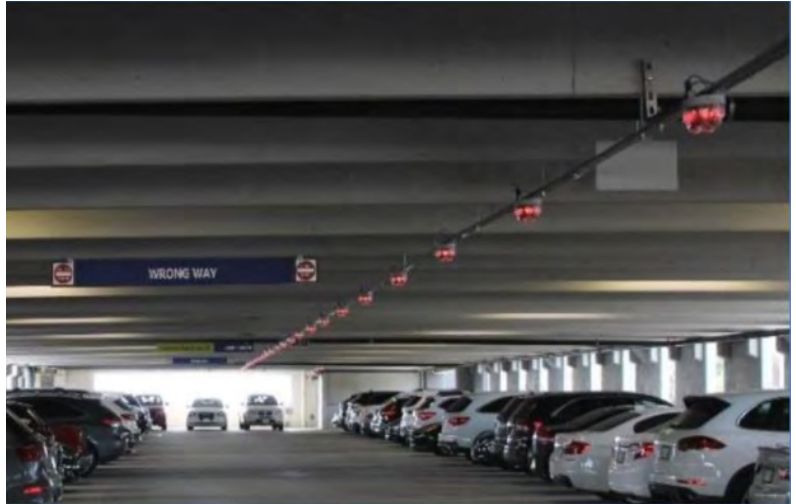


### ACTIVITY

To facilitate work for the ABM Smart Parking Project, Parking Structure 6 will experience a reduction in available parking stalls through November 2021.

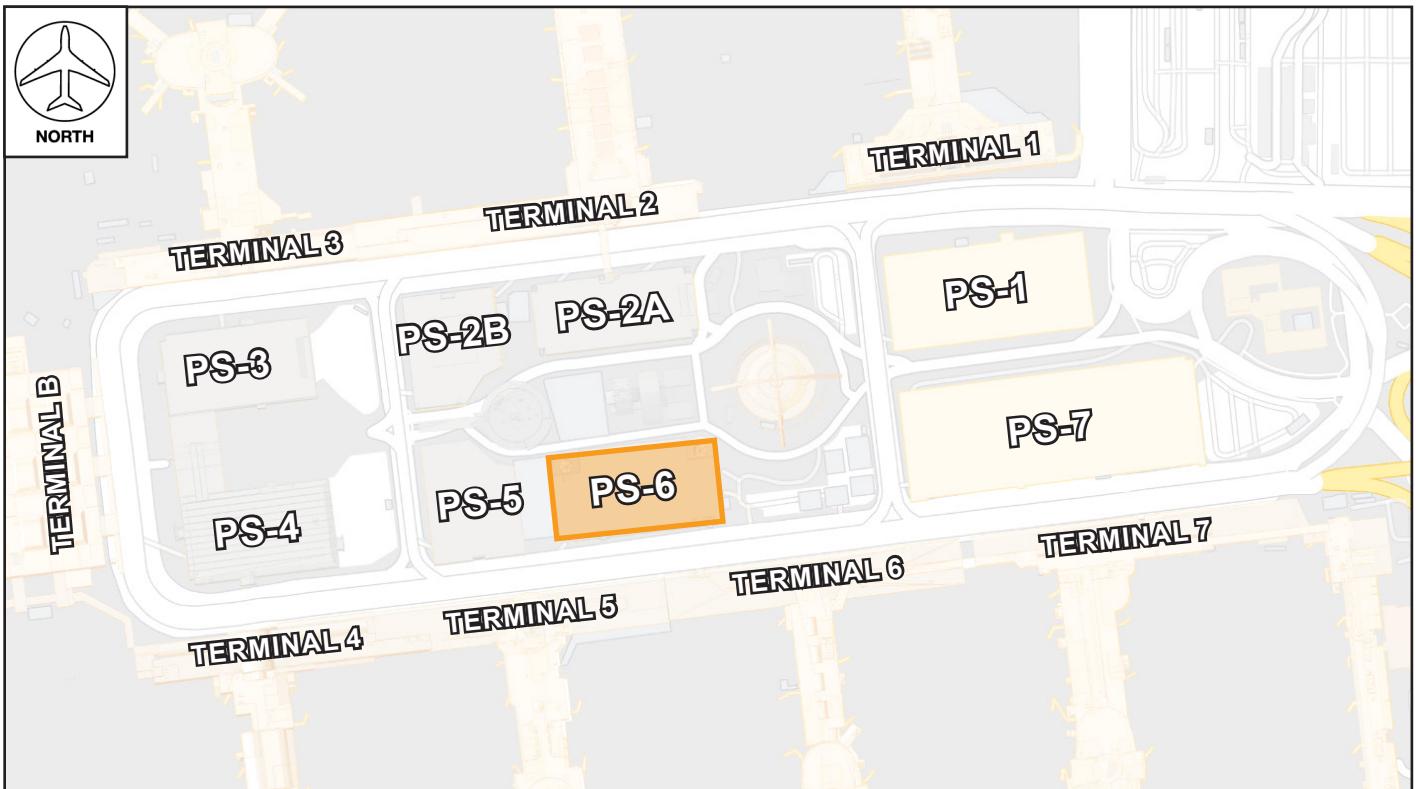
Work over the span of the project will include installation of EV chargers, PGS systems and pay on foot stations, painting, resurfacing, striping, and other civil modifications.

Signage will be posted to assist with parking availability and detours. Ingress to and egress from the structure will be maintained at all times, as well as vertical circulation within the structure.



The Smart Parking Project will be performed in all parking structures in the Central Terminal Area. Additional Construction Impacts Notices will be issued as work progresses to other structures.

For questions please contact Ryan Hooker: [ryan.hooker@abm.com](mailto:ryan.hooker@abm.com) // 310-944-8780.



LAX Construction Hotline: 310-649-5292 | @FlyLAXAirport | LAInternationalAirport  
 [LAXConstructionHotline@LAWA.org](mailto:LAXConstructionHotline@LAWA.org)

**C.A.L.M.**

Coordination and Logistics Management Team